


Transform Human Interactions into Actionable Intelligence

-  Leverage superior behavioral biometrics technology to provide a seamless experience to genuine users, actively detect threats and confidently protect your customers.



LexisNexis® BehavioSec®

is a leading solution for behavioral biometrics technology that expands your ability to trust digital transactions, reduce fraud and improve the consumer experience.

What is behavioral biometrics?

Behavioral biometrics technology invisibly authenticates users by analyzing user device interactions when they transact online.

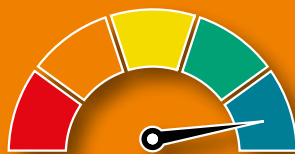
Behavioral data is passively gathered while a user is engaging with a website or mobile app.

For example:



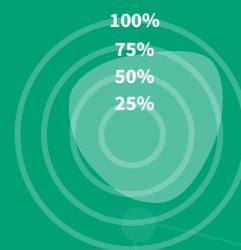
Behavioral Biometrics Analysis

The behavioral data is compared to the unique profile of the user in near real time.



Behavioral Scores

Verify customers, detect high-risk scenarios and make better, smarter and more timely decisions with our behavioral scores and insights.

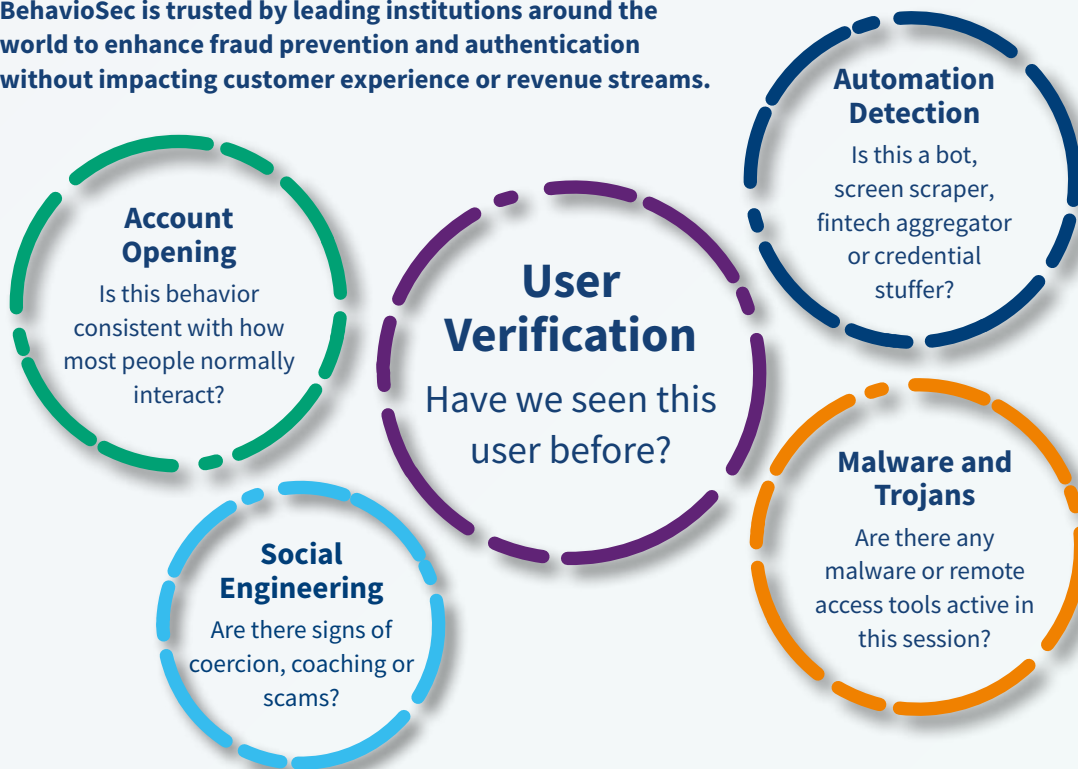


Deep Intelligence

The scores are delivered with detailed intelligence on human device interactions. This is combined with digital identity intelligence to quickly achieve situational awareness.

BehavioSec® overview

BehavioSec® helps businesses recognize trusted transactions, reducing false positives and fraud losses while providing a seamless customer experience. BehavioSec is trusted by leading institutions around the world to enhance fraud prevention and authentication without impacting customer experience or revenue streams.



BUILD TRUST AND IMPROVE FRAUD DETECTION

Empower risk-based authentication
Get powerful security controls to continuously assess digital interactions, without imposing any unnecessary friction

ENHANCE DECISIONING WITH BEHAVIORAL INSIGHTS

Ensure privacy and security without capturing additional personally identifiable or sensitive information

- Separate human from non-human activity
- Identify high and low-risk transactions
- Verify and trust returning customers
- Reduce false positives

ENABLE ADAPTIVE AUTHENTICATION AND DELIVER A POSITIVE EXPERIENCE

- Make smart decisions faster with improved investigative tools and data
- Additional intelligence for analytics and machine learning

PRIVACY BY DESIGN

The LexisNexis® Risk Solutions **advantage**



Lightweight and easy to implement

Our installation process is simple and optimized for rapid turn-up, short time-to-value and a phased implementation so you can increase the breadth and depth of protection for your apps and services according to your timeline and business requirements.

» Contact Us



About LexisNexis® Risk Solutions

LexisNexis® Risk Solutions harnesses the power of data and advanced analytics to provide insights that help businesses and governmental entities reduce risk and improve decisions to benefit people around the globe. We provide data and technology solutions for a wide range of industries including insurance, financial services, healthcare and government. Headquartered in metro Atlanta, Georgia, we have offices throughout the world and are part of RELX (LSE: REL/NYSE: RELX), a global provider of information-based analytics and decision tools for professional and business customers. For more information, please visit www.risk.lexisnexis.com and www.relx.com.

Our solutions assist organizations with preventing financial crime, achieving regulatory compliance, mitigating business risk, improving operational efficiencies and enhancing profitability. This document is for informational purposes only and does not guarantee the functionality or features of any LexisNexis Risk Solutions products identified.

LexisNexis Risk Solutions does not represent nor warrant that this document is complete or error free. LexisNexis, LexID and the Knowledge Burst logo are registered trademarks of RELX Inc. ThreatMetrix, Digital Identity Network, and SmartID are registered trademarks of ThreatMetrix, Inc. Other products and services may be trademarks or registered trademarks of their respective companies.